

Identifying and Supporting Trafficked Persons



28 June 2010

Abigail Stepnitz, National Coordinator
POPPY Project

Project „Polish Integration Forum” is co-financed by the European Fund for the Integration of Third-Country Nationals and the state budget





The POPPY Project

- 54 bed spaces—London, Sheffield and Cardiff ('Acute' service)
- Resettlement and Outreach Services.
- Funded by the Office of Criminal Justice Reform
- Counselling.
- Legal Advice.
- Support with Asylum and Immigration process.
- Support with Criminal Justice Process
- Access to Health Care Services.
- Access to education and English classes.
- Assistance with voluntary return.
- Research and Development Team (NOT GOVERNMENT FUNDED)



POPPY Referral Criteria

1. Women
2. 18+ years old
3. Trafficked into the UK
4. Experienced sexual exploitation OR domestic servitude in the UK



POPPY Referral Sources

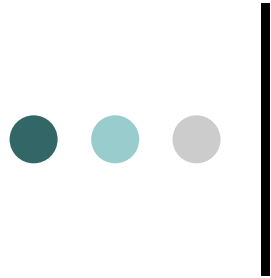
Cumulative from March 2003 - December 2009

NGO	368
Police	340
Solicitor	236
Immigration Services	130
Social Services	76
Self	71
Individual	67
Other	59
UKHTC	52
Health Services	44
Punter	22



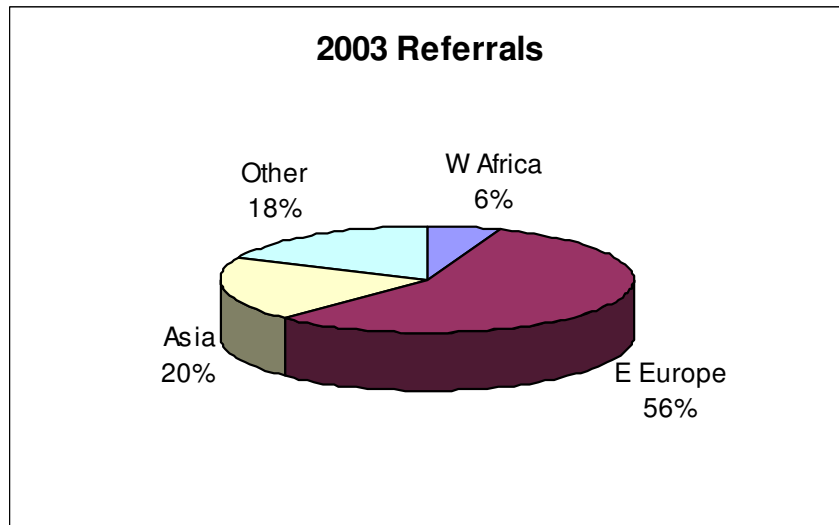
Top Countries of Origin

Nigeria	208	Ukraine	27
Lithuania	126	Czech Republic	26
China	119	Slovakia	23
Albania	110	Cameroon	23
Romania	81	Latvia	22
Thailand	73	Kenya	18
Uganda	55	Malaysia	14
Unknown	50	Liberia	14
Moldova	37	Hungary	14
Poland	33	Jamaica	14
United Kingdom	32	Zimbabwe	13
Vietnam	29	Ghana	13
Russia	28	India	12
Sierra Leone	28	Ethiopia	12

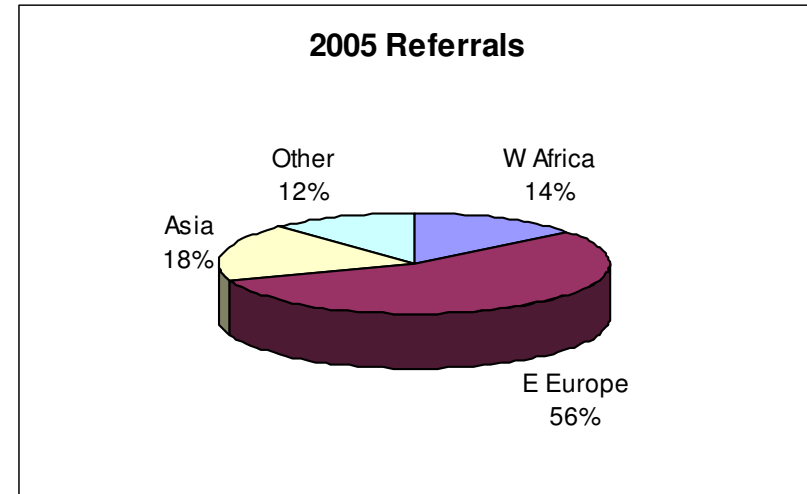


Changes in regions of referrals: 2003 - 2008

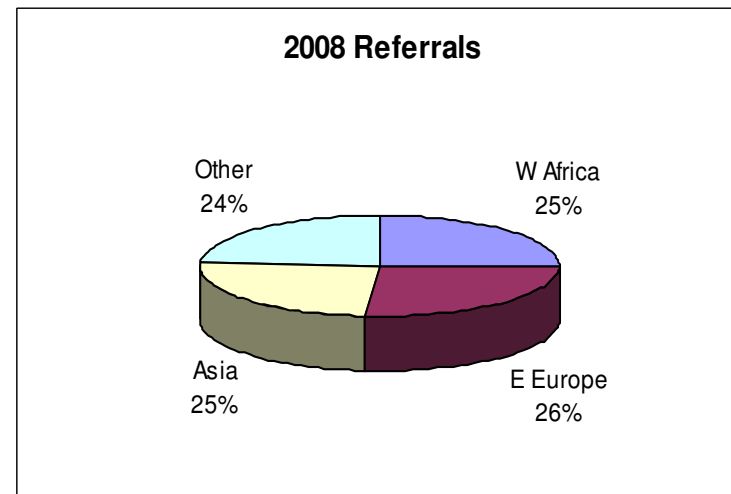
2003



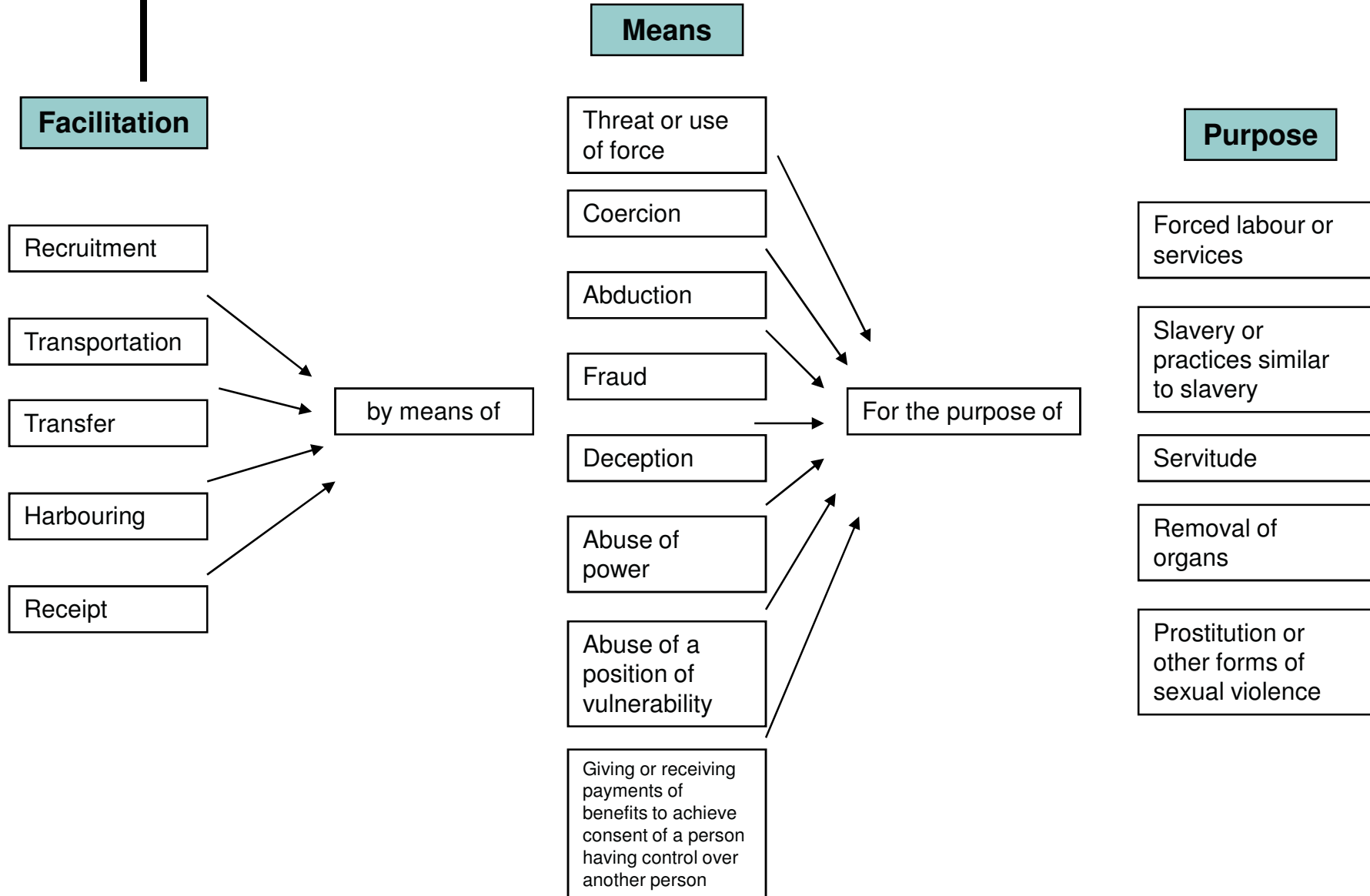
2005



2008



Victim Identification Flow Chart for Adults (18 and over)





Types of Trafficking

Trafficking for Sexual Exploitation

- Commercial sex act induced by force, fraud or coercion.
- Victims can be found in massage parlours, saunas, brothels, strip clubs, escort services, private flats, hotels, and other premises used for commercial sex acts.
- Increased use of residential homes to avoid detection.

Trafficking for Labour Exploitation

- Using force, fraud or coercion to recruit, harbor, transport, obtain or employ a person for labour or involuntary servitude, debt bondage or slavery.
- Victims can be found in domestic situations as nannies or maids, sweatshop factories, construction sites, farm work, restaurants.



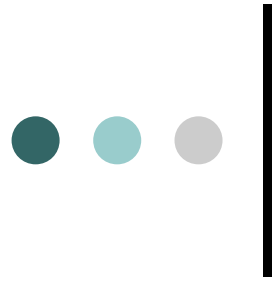
Impact on victims – transportation and trauma

- Kidnapped
- Betrayal by family member or acquaintance
- Lack of basics – food, drink, rest, warmth
- Life threatening travel routes – crossing borders illegally, dangerous modes of transport
- Loss of identity (e.g. Passport taken away)
- Long journeys, multiple trafficking
- Lack of safe human contact



Impact on victims - exploitation

- Physical violence
- Physical deprivation
- Physical illness and injury
- Lack of access to health care
- Illegal and forced abortions
- Forced sex, rape, sexual assault by pimps
- Threats, lies, deception
- Debt bondage
- Drug and alcohol abuse
- Isolation – language, culture, family
- No freedom of movement.



Impact on victims

Fear and Reprisals

- Fear of punishment
- Fear of deportation
- Fear of retribution
- Fear of authorities
- Fear of not being understood
- Fear for family safety
- Fear of pimp / trafficker



Physical Health

- Fatigue
- Weight Loss / Loss of Appetite
- Headaches
- Dizzy Spells
- Poor Memory
- Back Pain
- Joint / Muscle Pain
- Fractures / Sprains
- Facial Injuries
- Dental Problems
- Skin Infections

Sexual / Reproductive Health

- Pelvic Pain
- Pain on Urination
- Vaginal Discharge
- Vaginal Pain
- Vaginal Bleeding (not menstruation)
- Gynaecological Infections
- Irregular / Painful Periods

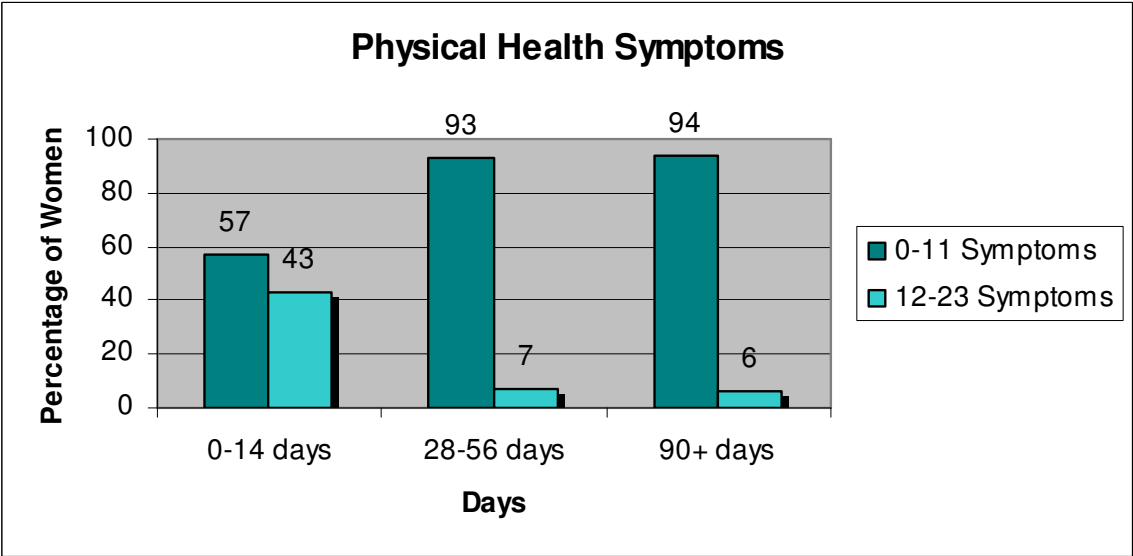
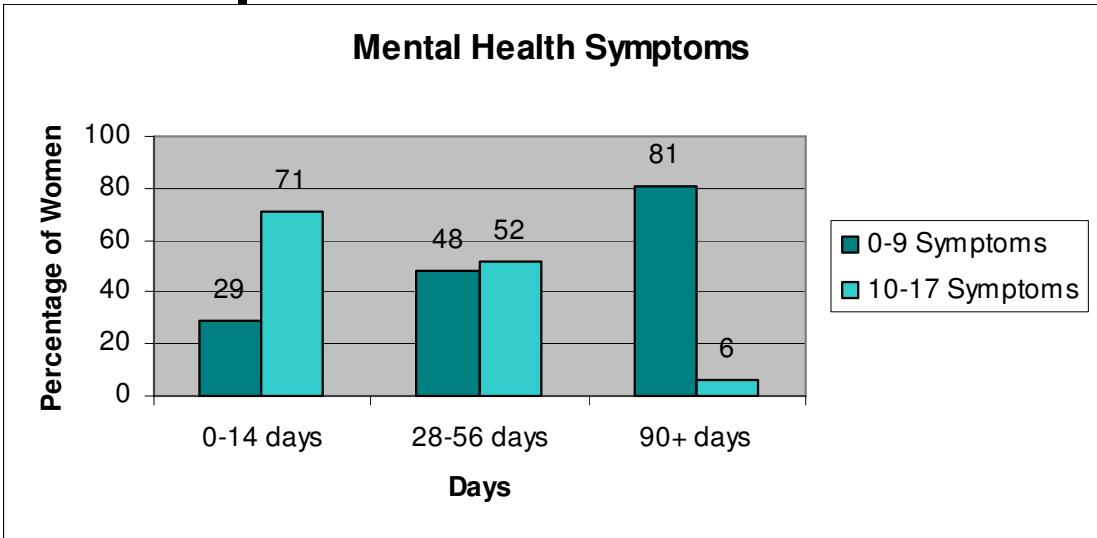


Impact- Mental Health

- Restless & agitated
- Insomnia / lethargy
- Substance dependency
- Eating disorders
- Frequent crying
- Impatience & Irritability
- Unmotivated
- Lack of sexual interest
- Poor concentration
- Self-blame / guilt
- Negative thoughts
- Despairing
- Feeling hopeless
- Loneliness
- Pessimism
- Suicidal ideation
- Self-harming

Concurrent physical and mental health symptoms

(courtesy of LSHTM)





Impact-Post Traumatic Stress Disorder

- Images / dreams / flashbacks
- Selective amnesia
- Anxiety
- Nightmares / disturbed sleep
- Social withdrawal /dissociation
- Avoidance of trauma triggers
- Easily startled



Trafficked Persons Understanding Mindset

Frequently victims:

- Do not speak English and are unfamiliar with UK culture.
- Confined to room or small space to work, eat, sleep.
- Fear, distrust police, government and health care providers.
- Are not aware that they are a victim of crime.
- Do not consider themselves victims.
- Blame themselves for their situations.
- May develop loyalties, positive feelings toward trafficker as coping mechanism (Stockholm Syndrome).
- May try to protect trafficker from authorities.
- Do not know where they are, because traffickers move them frequently to escape detection.
- Fear for safety of family in home country.



Obstacles in Disclosure

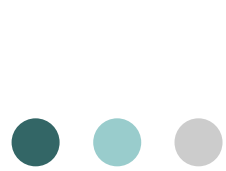
- Shame
- Lack of trust
- Fear of reprisals
- Distress, memory loss
- Oath-taking, juju (i.e. Voodoo religion, “witchcraft,” ritual abuse/torture)



Victim Identification

Key principles

- There is no official identification process / toolkit
- Humanitarian approach needed
- Victims should be treated with respect and recognition
- Potential victims should be interviewed by trained staff
- Staff should be aware of and sensitised to trafficking issues
- Staff should be trained in interviewing victims sensitively
- Accounts should be accepted as true until evidence suggests otherwise
- Staff should be able to analyse / assess information presented



National Referral Mechanism

- Importance of informed consent
- Liaising with “First Responders”
- Types of decisions and possible outcomes
 - Reasonable Grounds
 - Reflection Period
 - Conclusive Grounds
 - Residence Permit
- Intersection with asylum/immigration processes
- Other orgs with expertise in the field
 - Kalayaan, ECPAT, NSPCC line



Contact Details

Referral Line 020 7735 2062

24 hours/day, 7 days/week

Abigail Stepnitz, National Coordinator

abigail.stepnitz@eaveshousing.co.uk

Publications: www.eaves4women.co.uk